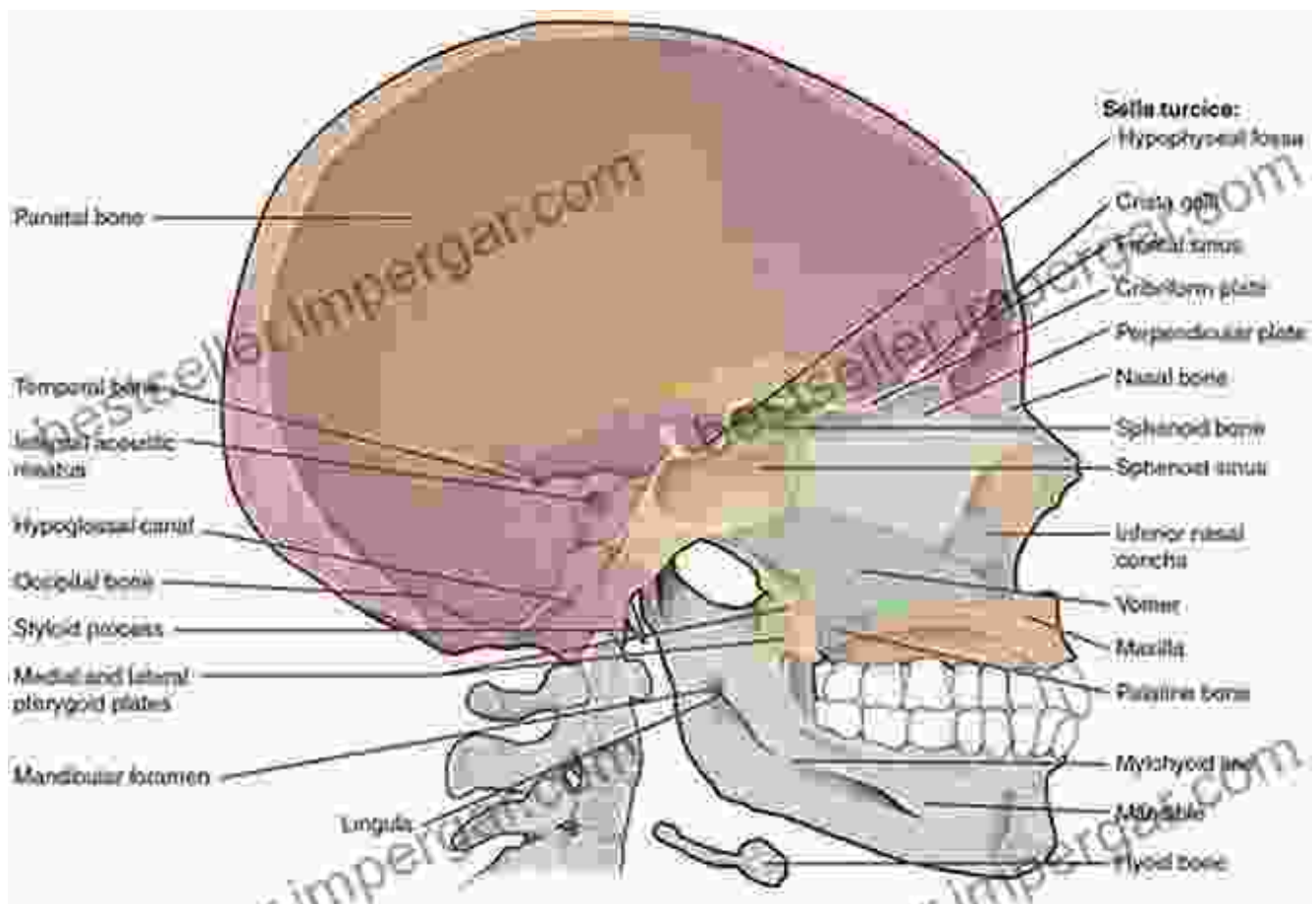


# The Skull Field Drawings: A Journey into the Landscapes of the Human Psyche

## : The Birth of an Artistic Enigma

In the vast landscapes of the American West, where the boundaries between the natural and the enigmatic blur, an extraordinary art form has emerged. John Pirillo, an artist known for his innovative land art installations, has created a series of captivating geoglyphs known as the Skull Field Drawings. These large-scale artworks, etched into the earth's surface, have captivated the attention of art enthusiasts, historians, and scientists alike.





## The Skull Field Drawings by John Pirillo

★★★★★ 5 out of 5

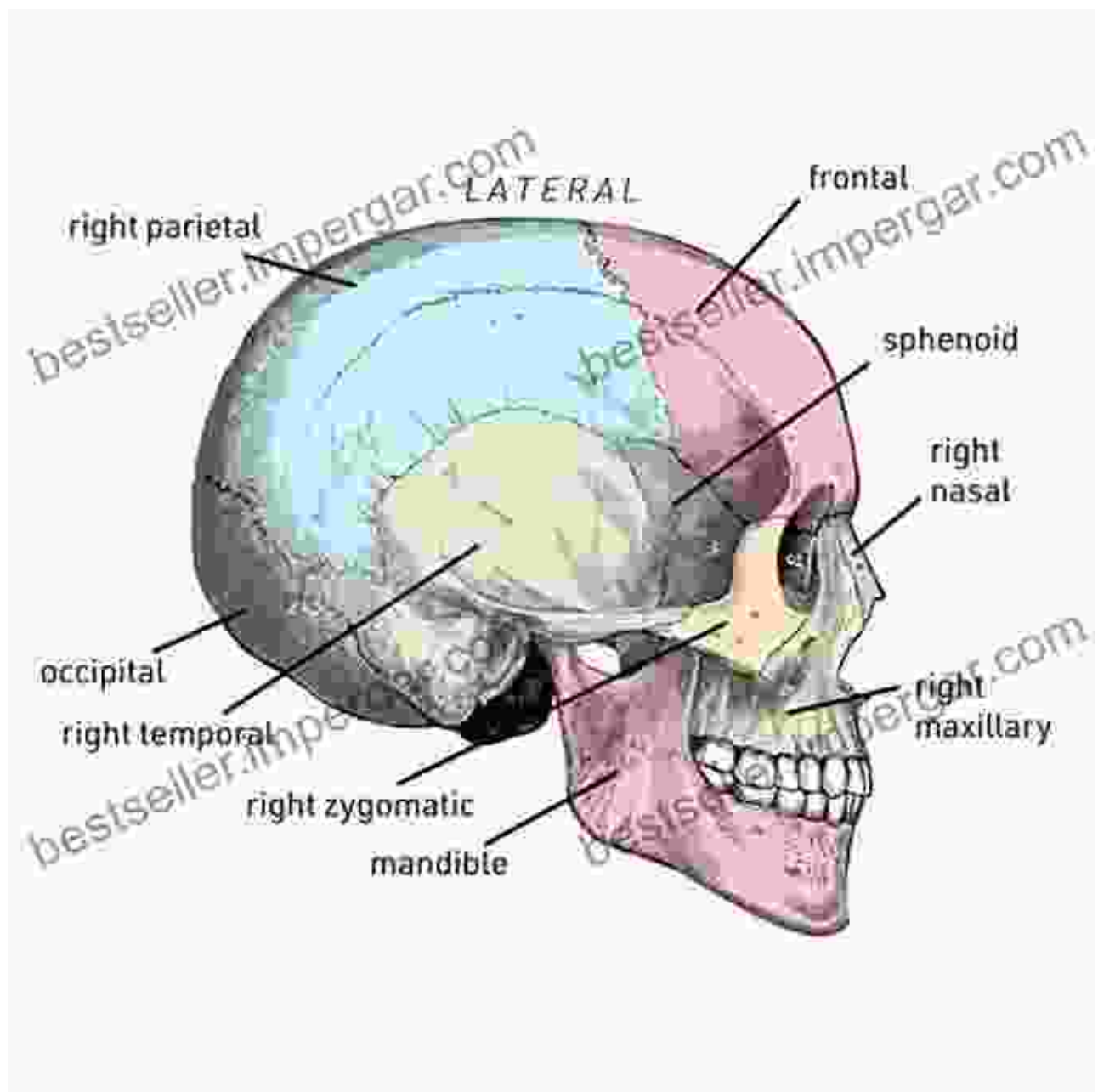
Language : English  
File size : 262193 KB  
Text-to-Speech : Enabled  
Enhanced typesetting : Enabled  
Print length : 248 pages  
Lending : Enabled  
Screen Reader : Supported



Pirillo's Skull Field Drawings are not simply aesthetic creations; they are profound artistic expressions that delve into the depths of the human psyche. Through the intricate patterns of skulls and other symbolic forms, Pirillo invites viewers to confront mortality, explore the subconscious, and reconnect with the sacredness of life.

### **Symbolism and Meaning: Unlocking the Secrets of the Skulls**

The skull, a powerful and universal symbol, forms the central motif of Pirillo's geoglyphs. In diverse cultures throughout history, the skull has been associated with mortality, the transience of life, and the enduring mystery of death. However, Pirillo transcends these traditional interpretations, imbuing the skull with a sense of reverence and spiritual significance.



The skulls in Pirillo's drawings are intricate and mesmerizing, inviting viewers to contemplate the deeper significance of life and death. (Image courtesy of John Pirillo)

Within the context of the Skull Field Drawings, the skulls transcend their macabre connotations. Pirillo presents them as gateways to self-discovery and personal transformation. By confronting the inevitable nature of death,

viewers are encouraged to embrace the present moment, appreciate the fragility of life, and seek meaning in the face of mortality.

Accompanying the skulls are various other symbolic forms that enrich the narrative of the drawings. Spirals, labyrinths, and geometric patterns evoke ancient spiritual traditions and rituals. These symbols invite viewers to engage with their inner selves, explore the complexities of human nature, and find a deeper connection to the cosmos.

### **Artistic Process: The Dance of Artist, Land, and Sky**

The creation of the Skull Field Drawings is an immersive and physically demanding process that requires meticulous planning and collaboration with nature. Pirillo works with local farmers and landowners to identify suitable fields, taking into account the contours of the land, the type of soil, and the effects of weather conditions.

Using a combination of GPS and traditional surveying techniques, Pirillo designs the intricate patterns of the drawings. He then uses a tractor to till the soil, creating furrows that contrast with the undisturbed earth, producing the desired visual effect.



The creation of a single drawing can take several days or even weeks, depending on its size and complexity. The ephemeral nature of the drawings adds to their allure, as they are susceptible to changes in weather and vegetation, evolving and disappearing over time.

### **Environmental Consciousness: Preserving the Fragility of the Land**

Pirillo is deeply conscious of the environmental impact of his work. He chooses sites that are not environmentally sensitive and takes precautions to minimize disturbance to the land. The materials used in the drawings are organic and non-toxic, ensuring that the artworks do not leave a permanent footprint on the landscape.

The Skull Field Drawings also serve as a reminder of our interconnectedness with the natural world. By creating these temporary works of art in remote locations, Pirillo encourages viewers to appreciate

the beauty and fragility of the environment. The ephemeral nature of the drawings highlights the importance of environmental conservation and the need to cherish the landscapes that inspire us.

### **The Human Connection: Resonating with the Shared Human Experience**

Beyond their artistic and symbolic significance, the Skull Field Drawings have a profound impact on viewers. The vast scale and immersive nature of the works create a sense of awe and humility, encouraging a profound connection with the human experience.



The Skull Field Drawings evoke a sense of wonder and connection, reminding viewers of their place within the vastness of the human experience. (Image courtesy of John Pirillo)

The universal themes explored in the drawings resonate with people from all walks of life. The confrontation with mortality, the search for meaning, and the desire for connection are fundamental human experiences. The Skull Field Drawings provide a space for viewers to contemplate these themes, reflect on their own lives, and forge a deeper sense of community.

## **: The Enduring Legacy of the Skull Field Drawings**

John Pirillo's Skull Field Drawings are more than just artworks; they are transformative experiences that invite viewers to confront their own mortality, embrace their humanness, and appreciate the interconnectedness of all things. Through the powerful symbolism of skulls and the immersive nature of his land art, Pirillo creates a bridge between the natural and the spiritual, the ephemeral and the eternal.

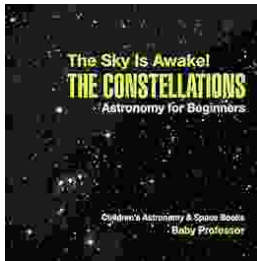
As the Skull Field Drawings continue to evolve and disappear over time, they leave behind a lasting legacy. They remind us of the fragility of life, the importance of living in the present, and the enduring power of art to connect us to our shared humanity. The Skull Field Drawings serve as a testament to the indomitable spirit and boundless creativity of the human soul.



### **The Skull Field Drawings** by John Pirillo

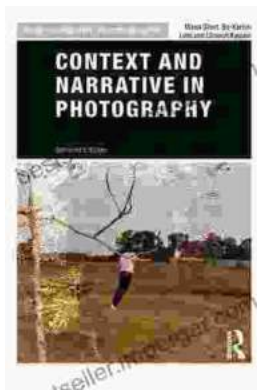
★★★★★ 5 out of 5

Language : English  
File size : 262193 KB  
Text-to-Speech : Enabled  
Enhanced typesetting : Enabled  
Print length : 248 pages  
Lending : Enabled  
Screen Reader : Supported



## The Sky Is Awake: Astronomy for Beginners

Embark on an enchanting journey through the cosmos with 'The Sky Is Awake: Astronomy for Beginners.' This captivating book is designed to ignite...



## Unveiling the Essence of Photography: Context and Narrative in the Art of Image-Making

Photography, the art of capturing moments in time through the lens of a camera, extends beyond mere technical proficiency. It is an intricate interplay of context...